

Perspectives in Art Final Exam Review

Ms. Yetter

Units:

- ▶ Portraits / Self-Portraits
- ▶ HerStory
- ▶ Dreams and Other Worlds
- ▶ Myths
- ▶ Time
- ▶ Artfully Designed
- ▶ Arts Alive!

Portraits / Self-Portraits

The background features abstract, overlapping geometric shapes in various shades of blue, ranging from light sky blue to deep navy blue. The shapes are primarily triangles and polygons, creating a dynamic, layered effect on the right side of the frame, while the left side is mostly white.

What is the difference between a portrait & a self-portrait?

- ▶ Portrait = a drawing, painting, photo, or sculpture of a person
- ▶ Self-Portrait = a drawing, painting, photo, or sculpture of the artist creating the art piece

The background features abstract, overlapping geometric shapes in various shades of blue, ranging from light sky blue to deep navy blue. These shapes are primarily located on the right side of the frame, creating a modern, layered effect. The text is centered on the left side of the image.

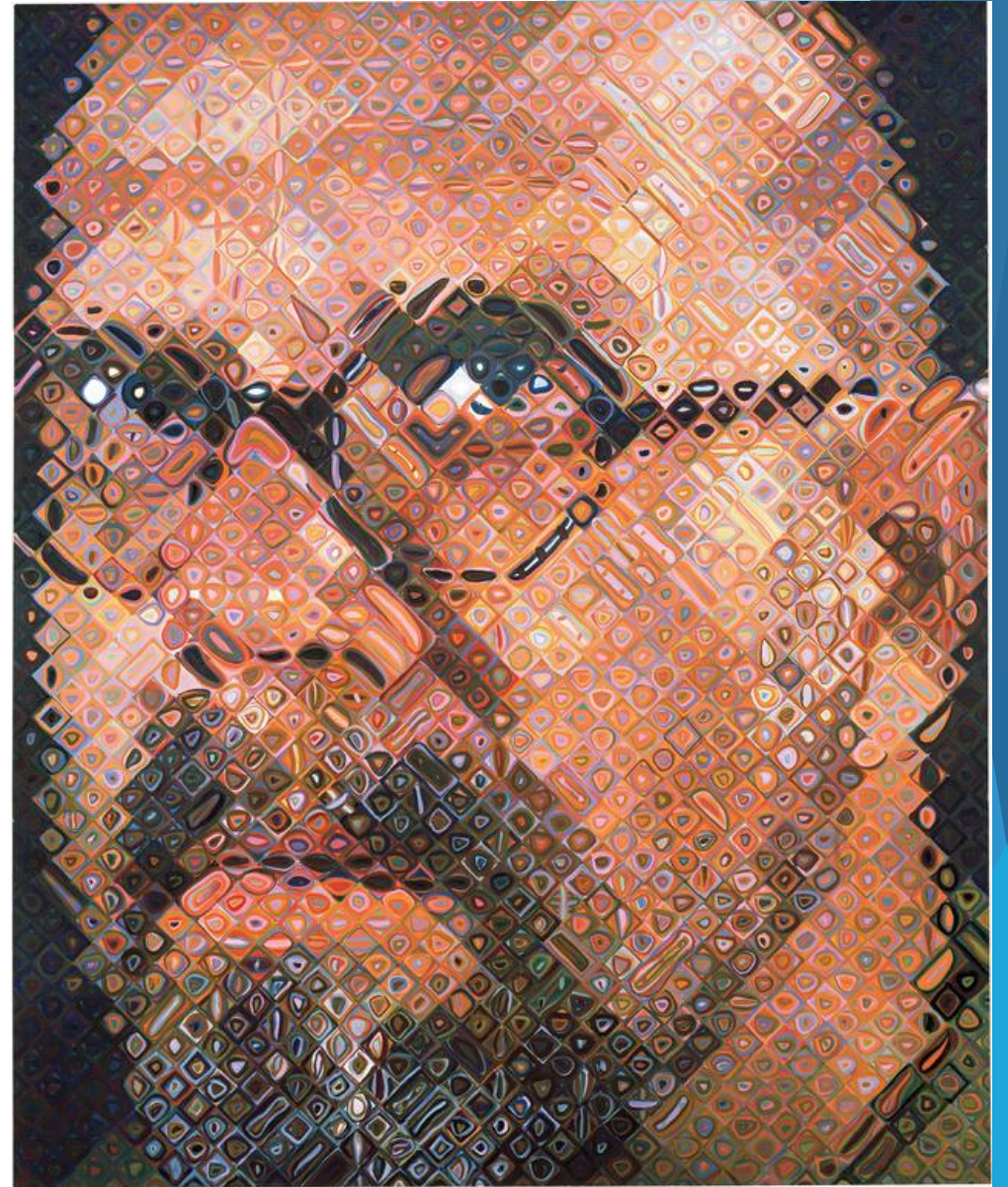
Why might an artist create
a self-portrait?

- ▶ Are there clues within this self-portrait of Frida Kahlo?
- ▶ Is it a happy portrait? How can you tell?
- ▶ What do you think the animals represent?



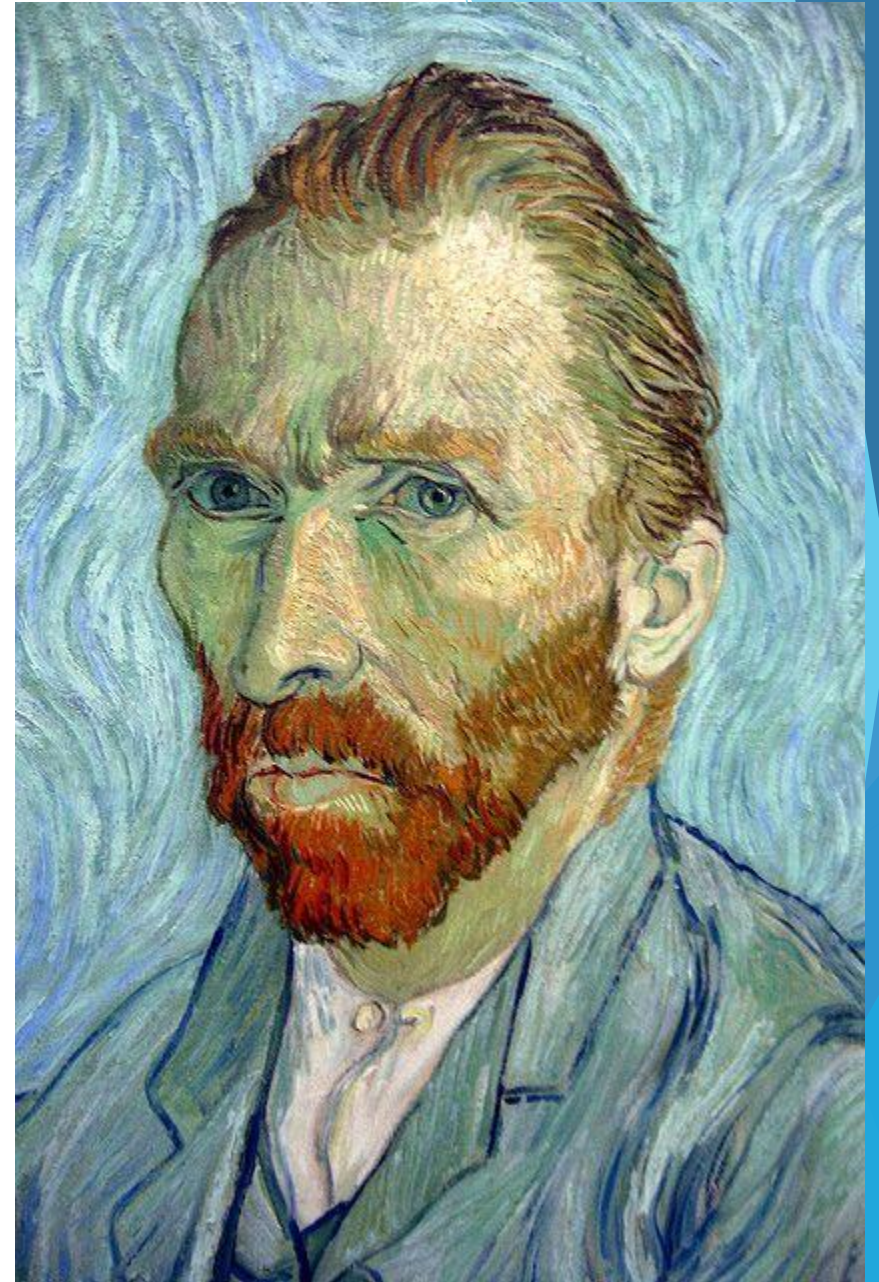
Chuck Close

- Chuck Close
- “Self-Portrait”
- 1997
- oil on canvas
- Museum of Modern Art, NYC
- 8' 6" x 7' (259.1 x 213.4 cm)
- Contemporary artist



Vincent Van Gogh

- Vincent Van Gogh
- “Self-Portrait”
- 1889
- oil on canvas
- Musee d’Orsay, Paris, France
- 2’ 2” x 1’ 9”
- Post-impressionism



Leonardo da Vinci

- Leonardo da Vinci
- “Mona Lisa”
- 1503-1504
- Oil on wood
- The Louvre museum, Paris, France
- 2' 6" x 1' 9"
- High renaissance



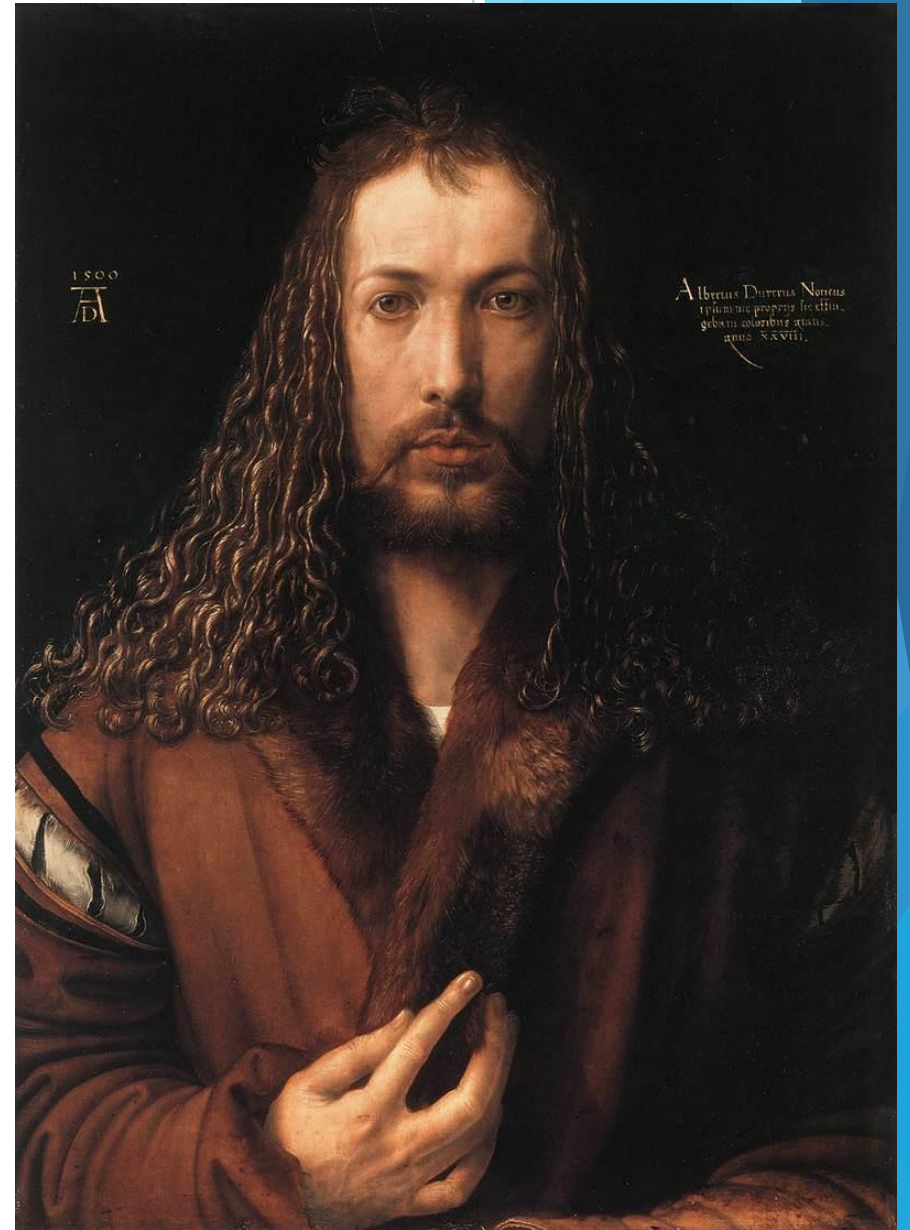
Leonardo da Vinci

- Leonardo da Vinci
- “Self-Portrait”
- 1512-1515
- Chalk
- Bibliotheca Reale, Turin
- 1' 1" x 0' 9"
- High renaissance



Albrecht Dürer

- Albrecht Dürer
- “Self-Portrait”
- 1500
- Oil on wood panel
- Alte Pinakothek, Munich
- 2' 2" x 1' 7"
- High Renaissance



HerStory

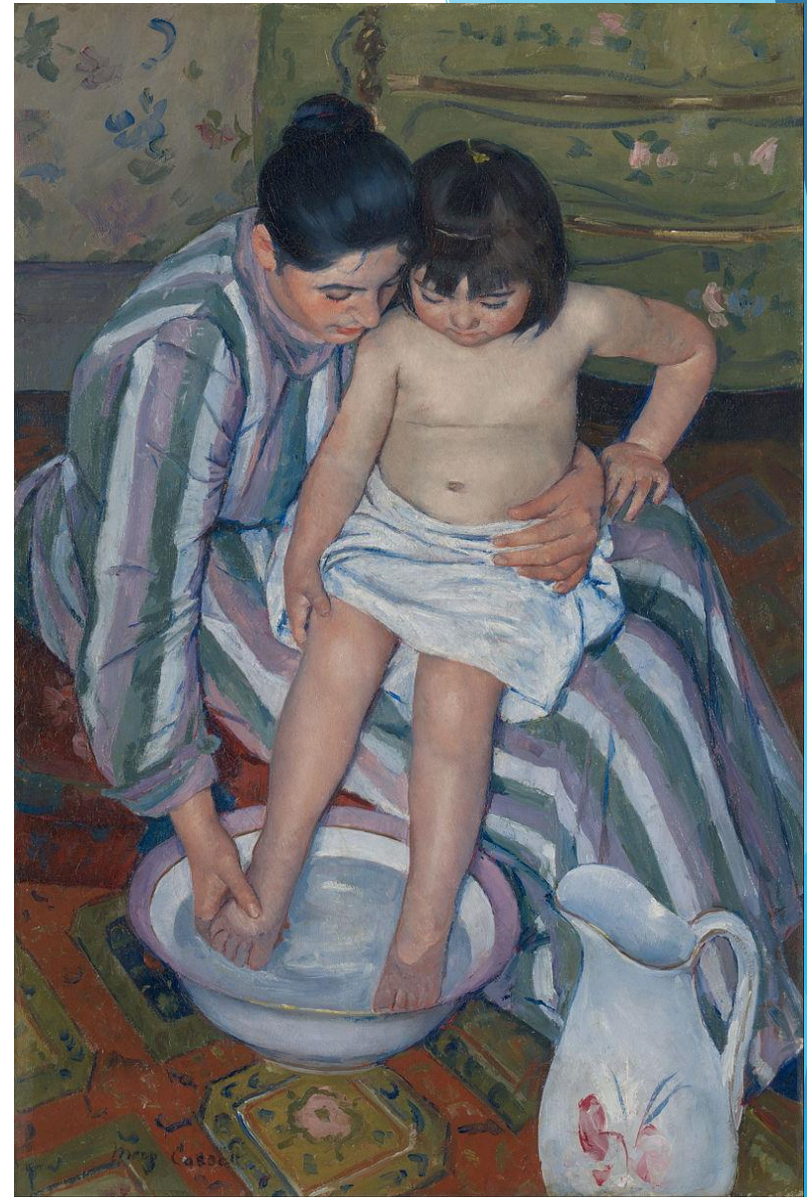
The background features abstract, overlapping geometric shapes in various shades of blue, ranging from light sky blue to deep navy blue. The shapes are primarily triangles and polygons, creating a dynamic, layered effect. The overall composition is clean and modern, with the text 'HerStory' centered in a light blue color that matches the lighter tones of the background.

“feminism”

- ▶ Noun
- ▶ : the belief that men and women should have equal rights and opportunities
- ▶ : the theory of the political, economic, and social equality of the sexes

<http://www.merriam-webster.com/dictionary/feminism>

- ▶ What was the role of women in the early 1900s?
 - ▶ Caregiver
 - ▶ Attended to household chores
 - ▶ Did not work / farm
-
- ▶ Cassatt often created images of the social and private lives of women, with particular emphasis on the intimate bonds between mothers and children.



Mary Cassatt, "The Child's Bath" (The Bath), 1893, oil on canvas, 39½ × 26 in., Art Institute of Chicago

- ▶ How were women viewed in the 1940s, 1950s, 1960s?
- ▶ Stay-at-home moms
- ▶ No military
- ▶ Symbolism in movies



Andy Warhol, "Turquoise Marilyn Monroe", 1964. Acrylic and Silkscreen

- ▶ How are women viewed in today's society?
- ▶ Fight for equal rights
- ▶ “Equality” across the boards



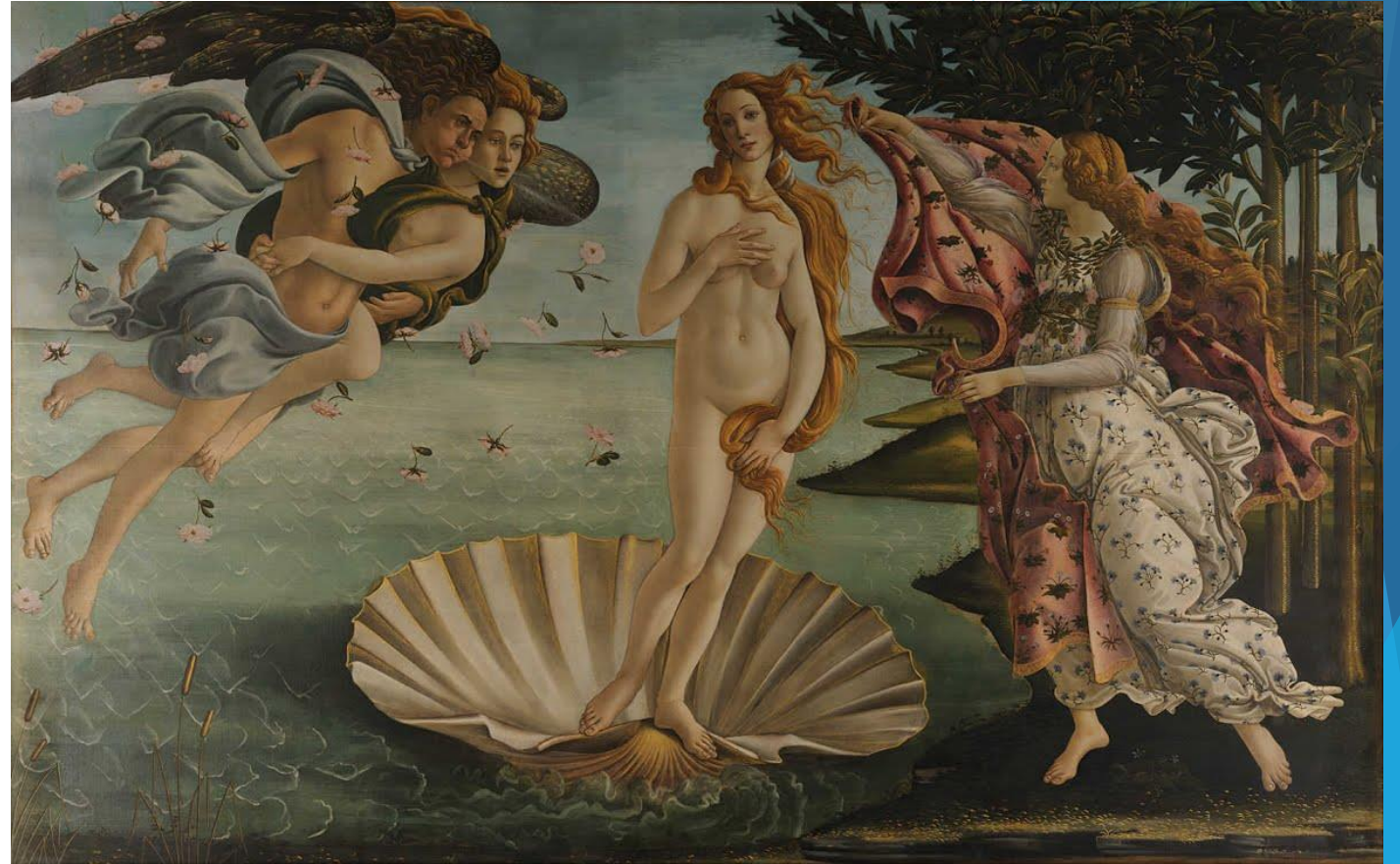
Cindy Sherman, “Untitled Film Still #21”, 1977

Issues with gender equality -

- ▶ **Home** → women seen as the “caregiver” , domestic (movie “Mr. Mom”)
- ▶ **Work** → equal working opportunities, job segregation, pay (stereo-typical male/female jobs)
- ▶ **Society** → voting, legal rights, military (nurses vs. frontline)
- ▶ **Political** → holding offices (a woman as President)

Botticelli


- ▶ “The Birth of Venus”
- ▶ 1484-1486
- ▶ Tempera on canvas
- ▶ Uffizi Gallery
- ▶ 5’8” x 9’2”
- ▶ Early Renaissance



The Guerrilla Girls

- ▶ **Guerrilla Girls** are an anonymous group of feminist, female artists devoted to fighting sexism and racism within the art world.
- ▶ The group was formed in response to the Museum of Modern's Art exhibition "An International Survey of Recent Painting & Sculpture".
 - ▶ In total, the show featured works by 169 artists - only 13 were female.
- ▶ The group formed in NYC in 1985 with the mission of bringing gender and racial inequality in the fine arts into focus within the greater community.
- ▶ Members are known for the gorilla masks they wear to remain anonymous. The masks conceal their identity because they believe that their identity is not what matters
 - ▶ "...mainly, we wanted the focus to be on the issues, not on our personalities or our own work."
- ▶ Their identity is hidden to protect themselves from the backlash of prominent individuals within the art community.





Do women have to be naked to get into the Met. Museum?

Less than **4%** of the **artists** in the Modern Art sections are women, but **76%** of the **nudes** are female.

Statistics from the Metropolitan Museum of Art, New York City, 2011

GUERRILLA GIRLS CONSCIENCE OF THE ART WORLD
www.guerrillagirls.com

Dreams & Other Worlds

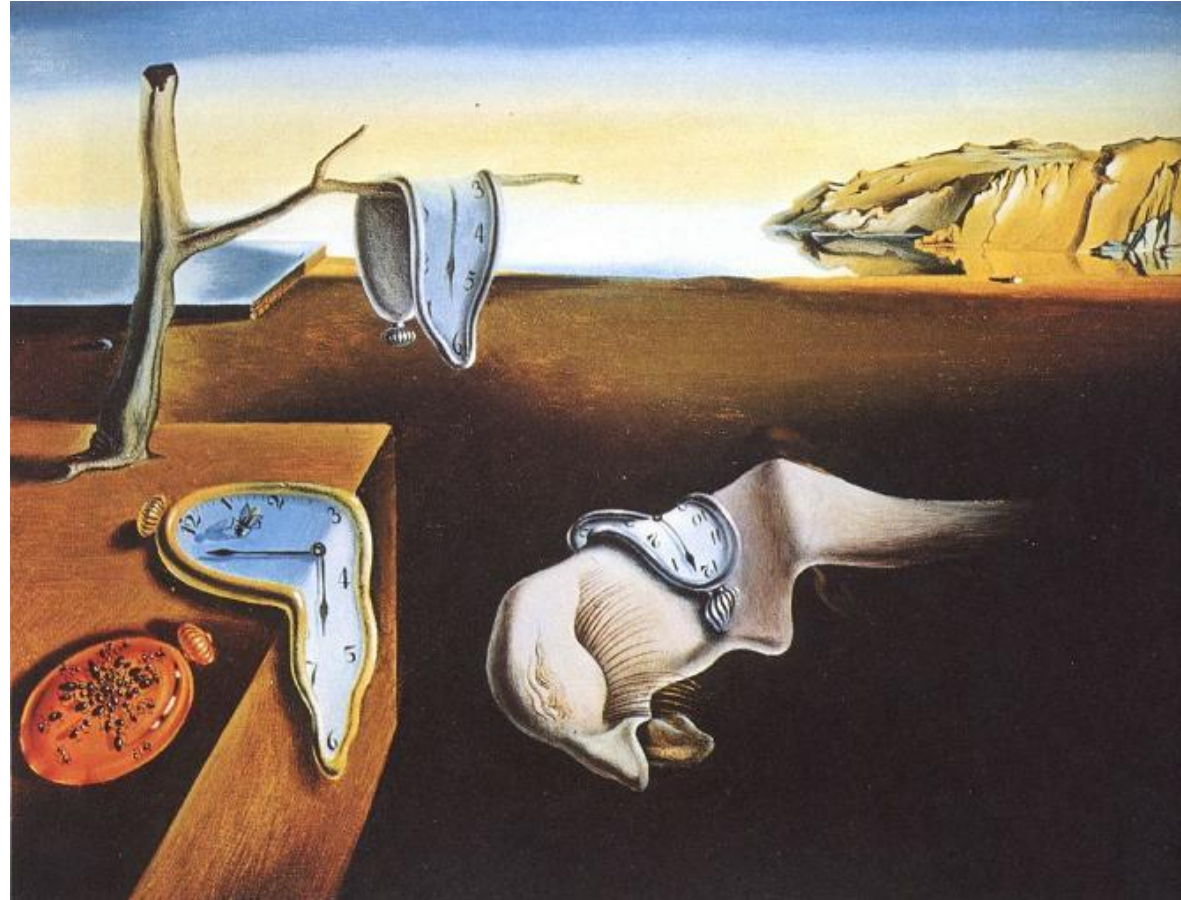
The background features abstract, overlapping geometric shapes in various shades of blue, ranging from light sky blue to deep navy blue. The shapes are primarily triangles and polygons, creating a dynamic, layered effect on the right side of the page.

Surrealism

- ▶ 1924 - late 1966 (The Great Depression)
- ▶ Avant-garde movement which sought to release the creative potential of the unconscious mind
- ▶ Based off of Freudism (dreams & what they mean)
- ▶ Surrealism used the element of surprise
- ▶ Artists explored dreams as a vivid form of reality
- ▶ Surrealism will make you think about symbolism to be able to explain the art

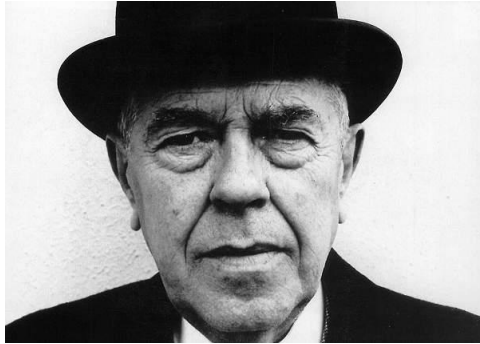
“The Persistence of Memory”, 1931

This painting of soft, melting pocket watches is interpreted as the watches are a rejection of the assumption that time is rigid or deterministic. This idea is supported by other images shown in the painting, such as the expanding landscape and other limp watches shown being devoured by ants.



Salvador Dalí
“The Persistence of Memory”
oil on canvas
1931

René Magritte



November 21, 1898 -
August 15, 1967



*"The Human Condition",
1935*



"Golconda", 1953



"The Treachery of Images", 1928-29

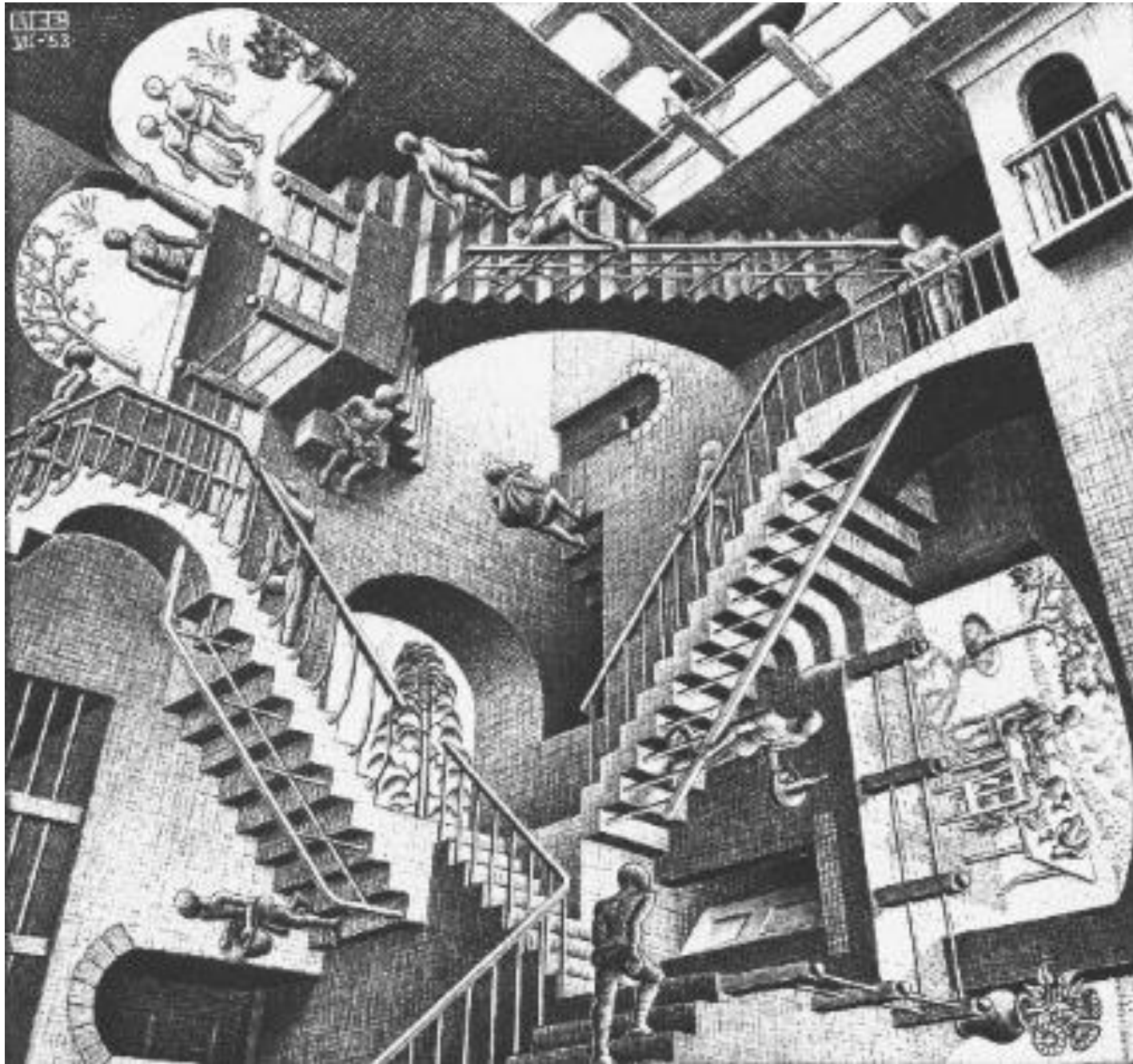


Vladimir Kush



African Sonata

M.C. Escher, "Relativity", 1953



Myths

The background features abstract, overlapping geometric shapes in various shades of blue, ranging from light sky blue to deep navy blue. These shapes are primarily located on the right side of the frame, creating a modern, layered effect against the white background.

What is a Myth?

- ▶ A traditional story, especially one concerning the early history of a people or explaining some natural or social phenomenon, and typically involving supernatural beings or events.
- ▶ Most artists draw inspiration from mythology to create an artwork or a series of artworks.

How have Myths played a part in art?

- ▶ Many myths are such compelling stories that artists have turned to them again and again, reinterpreting them from the vantage point of their own experience and imagination.
- ▶ A work of art can trigger a story
- ▶ Regardless of why or how art was created, each image contributes an added dimension to our understanding or interpretation of that myth
- ▶ Many images represent myths that explain a practice, belief, institution, or natural phenomenon
- ▶ Hero myths, tales of adventure filled with fantastic beings and superhuman feats

The myth of Pandora's Box



John William Waterhouse,
1903



John William Waterhouse



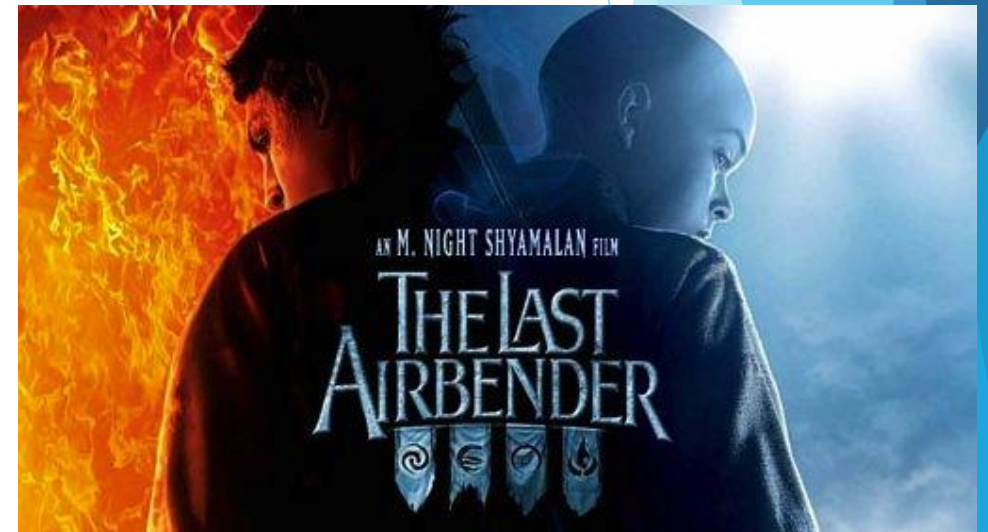
Daniel F. Gerhartz

Mythology in the 21st Century



PJ-389 Percy Jackson prepares to give a final 'heads up' to Medusa (Uma Thurman).
Photo credit: Courtesy Twentieth Century Fox

TM and © 2010 Twentieth Century Fox Film Corporation. All rights reserved. Not for sale or duplication.



Time

What is time?

- ▶ What does it mean?
- ▶ What does it represent?
- ▶ How do we “show” time?

- ▶ How can an artist show time through a piece of artwork with no words?



Time

The OxfordDictionaries.com definition of TIME:

NOUN

- The indefinite continued progress of existence and events in the past, present, and future regarded as a whole:

VERB

- Plan, schedule, or arrange when (something) should happen or be done

- ▶ Continues on, never stops
- ▶ People who have too much time may become bored and unmotivated
- ▶ People who do not have enough time may become stressed and anxious

How does “time” play a part in art history?

- ▶ Can art be timeless?
- ▶ How do we preserve art?
- ▶ How does an artist incorporate a time period in their work? What clues can you use to help figure out the time?



Audrey Flack, "Marilyn", 1977, oil over acrylic on canvas, 96" x 96", University of Arizona Museum of Art, Tucson, Arizona



Robert Smithson, "Spiral Jetty", 1970, mud, precipitated salt crystals, rocks, Rozel Point, Great Salt Lake, Utah



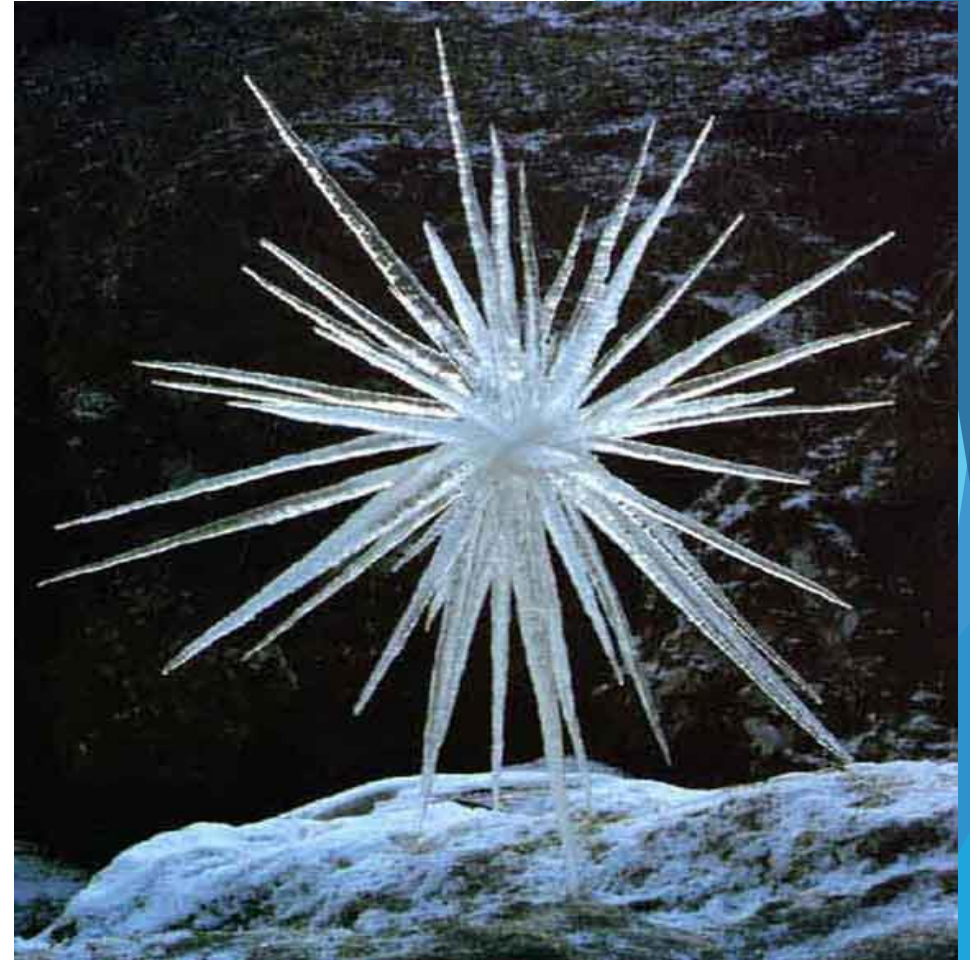
Giacomo Balla, "Dynamism of a Dog on a Leash", 1912



Manfred Kielnhofer, "Guardians of Time", 2012



Neve Azevedo, "Army of Melting Men", Berlin, Germany, 2009



Andy Goldsworthy, "Icicle Star", Dumfriesshire, Scotland, 1985

Artfully Designed

Architecture

The background features abstract, overlapping geometric shapes in various shades of blue, ranging from light sky blue to deep navy blue. These shapes are primarily located on the right side of the frame, creating a dynamic, layered effect. The rest of the background is plain white.



Stonehenge, Wiltshire, England



Frank Lloyd Wright, "Fallingwater", 1936 - 1939, Mill Run, Pennsylvania



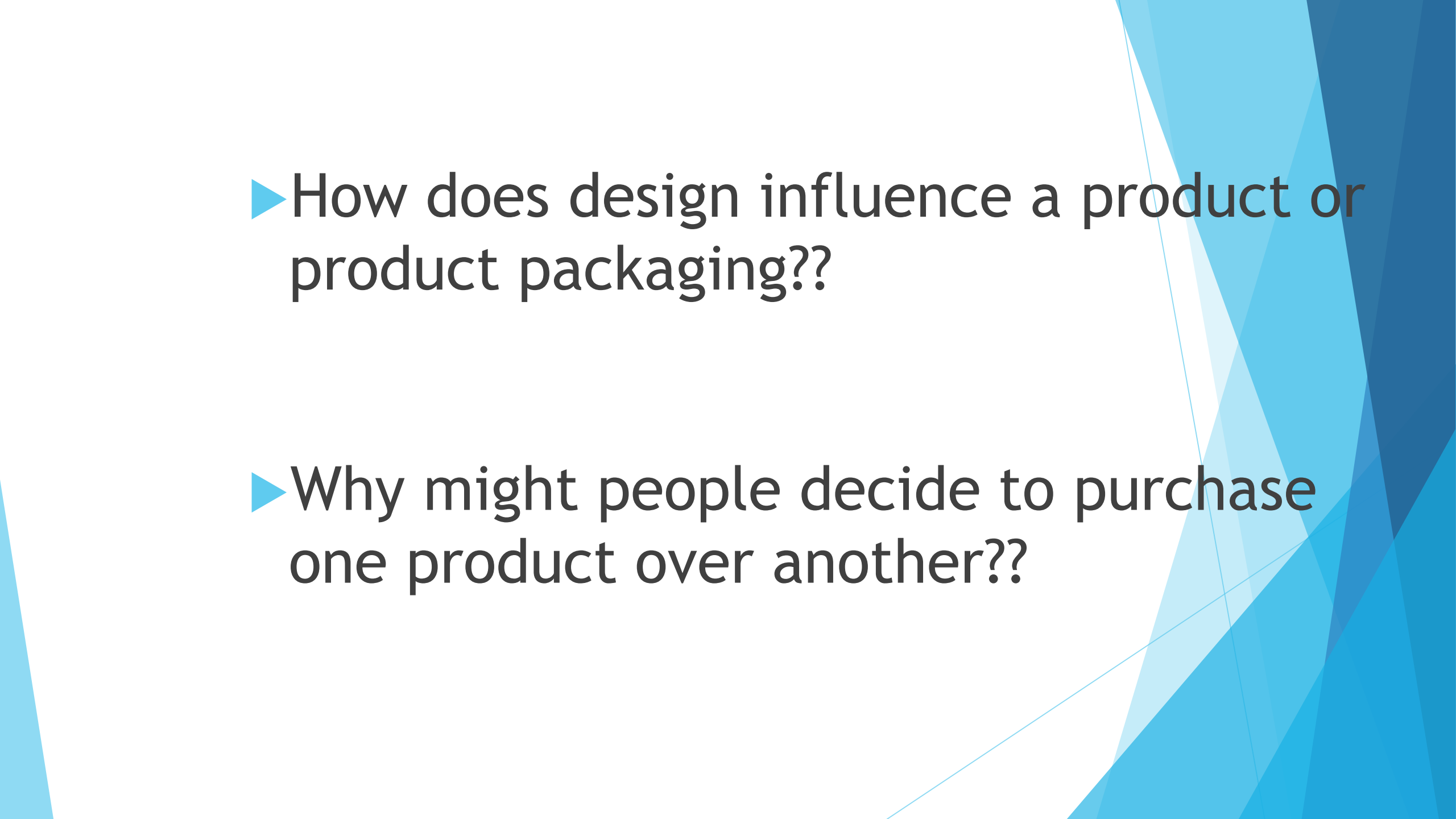
World Trade Center, New York City



Tacoma Narrows Bride (“Galloping Gertie”), Tacoma, Washington, 1943

Product Design

The background features abstract, overlapping geometric shapes in various shades of blue, ranging from light sky blue to deep navy blue. These shapes are primarily located on the right side of the frame, creating a modern, layered effect against the white background.

- 
- The background of the slide features abstract, overlapping geometric shapes in various shades of blue, ranging from light sky blue to deep navy blue. The shapes are primarily triangles and polygons, creating a modern, dynamic feel. The text is positioned on the left side of the slide, set against a white background.
- ▶ How does design influence a product or product packaging??
 - ▶ Why might people decide to purchase one product over another??



Shoe Design -



Fashion Design



Cakes / Cupcakes -



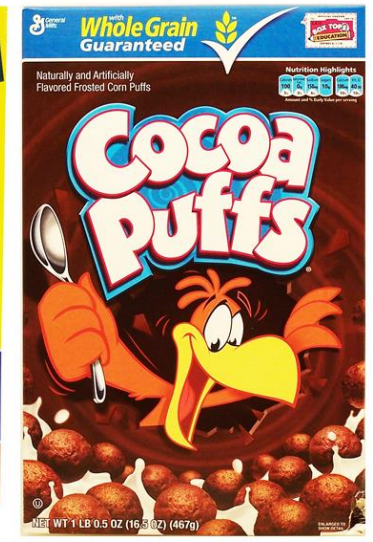
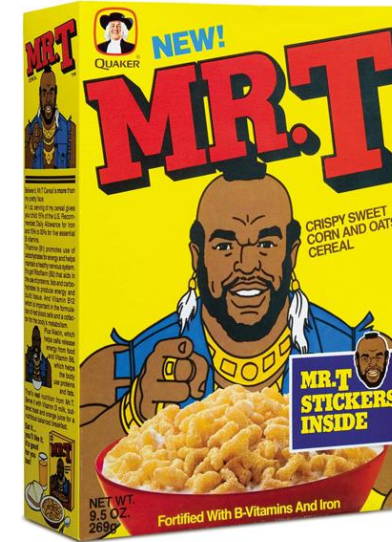
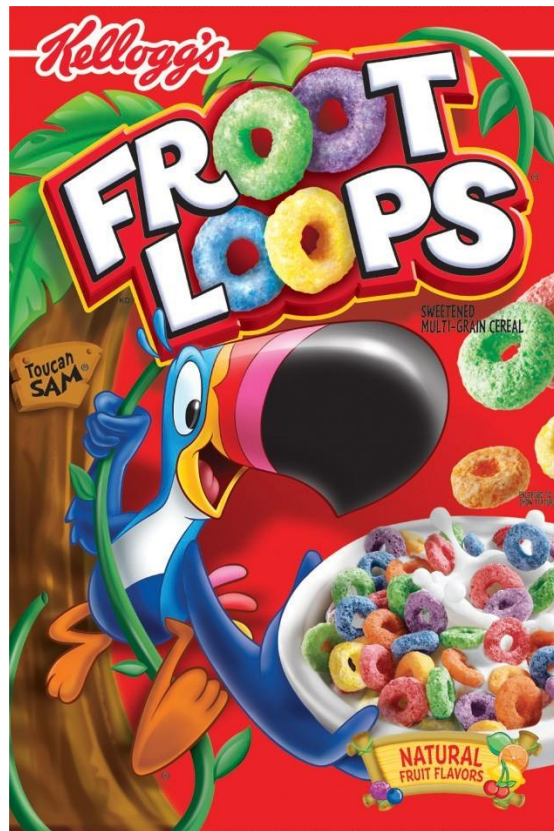
Jewelry -



Pens / Pencils -



Cereal Boxes -



Arts Alive!

Performance Art

- ▶ In performance art, the artist's body is the medium, and the actions he or she performs are the work of art.
- ▶ The term, used loosely at first, arose in the early 1960s as a way to refer to and describe the many live events taking place at that time.
- ▶ It consists of four elements: time, space, the performer's body, and a relationship between audience and performer.



Happenings

- ▶ A **happening** is a performance, event, or situation, meant to be considered art.
- ▶ Happenings gained popularity in the 1950s and 1960s
- ▶ Key elements of happenings are planned, but artists sometimes retain room for improvisation so the outcome can be unpredictable





- ▶ **Marta Minujín** is an Argentinian conceptual and performance artist. In the 1965 happening, *reading the news*, got into the Río de la Plata wrapped in

Flash Mobs

- ▶ A large public gathering at which people perform an unusual or seemingly random act and then disperse, typically organized by means of the internet or social media.



Interactive Art

- ▶ Interactive art is a type of installation that allows the audience or viewer to interact and become a part of the piece
- ▶ Interactive art first came about in the 1920s. A famous example of Marcel Duchamp's piece named [Rotary Glass Plates](#), which required the viewer to turn on the machine and stand at a distance.
- ▶ Interactive art as we know it today gained popularity in the '60s and '70s when artists began to incorporate new technology, such as computers and video, and experiment with live performances and interactions.



MiguelChevalier's
Kaleidoscope Carpet

Of all the projects..

- ▶ Think back to every project that we've done with each of these units.
- ▶ What stood out to you?
- ▶ What do you wish you could do again?